

Epson Perfection V600 Photo Flatbed Scanner (Station 4)



Figure 2 Epson Perfection V600 Photo Flatbed Scanner.

This is the Epson Flatbed scanner attached to station 4, pictured on the left. It can scan and restore photos, documents, film negatives and positives including 35 mm slides.

The scanner can be operated from buttons on the front panel of the scanner. However, using the Epson software is easier and provides more control.



Figure 1 Epson Scan Software Icon.

Look for the Epson Scan icon on computer 4 desktop, as shown on the left. You can also find the pdf manual there, as well. Look for the pdf icon labeled “Manual Epson V6...”

This user’s guide will provide an overview for common uses of the scanner, using photos and screen captures that make it easier to learn. Advanced applications are described in the Epson Manual.

The software supports four modes of operation. When the software opens, look at the top right corner for the “Mode:” selection label. A drop-down menu below the label provides four options. Below are the Epson Manual descriptions of the four options:

Full Auto Mode lets you scan quickly and easily, without selecting any settings or previewing your image. Full Auto Mode is best when you need to scan your originals at 100% size and you do not need to preview the images before scanning. You can restore faded colors or remove dust marks in Full Auto Mode. This is the default mode in Epson Scan.

Office Mode lets you quickly select settings for scanning text documents and check their effects with a preview image.

Home Mode lets you customize some scanning settings and check their effects with a preview image. Home Mode is best when you want to preview images of your originals before scanning them. You can resize the image as you scan, adjust the scan area, and adjust many image settings, including color restoration, dust removal, and backlight correction.

Professional Mode gives you total control of your scanning settings and lets you check their effects with a preview image. Professional Mode is best when you want to preview your image and make extensive, detailed corrections to it before scanning. You can sharpen, color correct, and enhance your image with a full array of tools, including color restoration, dust removal, and backlight correction.

This users guide will describe Full Auto and Home Mode in enough detail for FamilySearch Center users. Office Mode is intended for document scanning. This center has better options for document scanning, so it won't be discussed in this guide. Professional Mode is more complicated than most of our users require and won't be discussed here either. If you are interested in these modes, check the Epson Manual (Manual Epson V600 Photo Scanner.pdf). The pdf file opens with contents on the left side of the window. About half way down the content list is a bookmark titled "Scanning Your Originals". Selecting this opens a new page on the right where you can find details on the four scanner operations. "Scanning in Office Mode" and "Scanning in Professional Mode" are links to learn more about these modes that aren't included in this user's guide, if you want to learn more about them.

Epson Full Auto Mode



Figure 3 The Full Auto Mode Software option

Notice the "Mode:" label at the top right and below it and observe that "Full Auto Mode" has been selected in the drop-down menu.

Using Full Auto Mode has the advantage that the scanning occurs in one step and is faster than Home Mode. However, Home Mode supports film and slide scanning and has more options.

Notice that the Full Auto Mode page has four additional buttons besides the Mode selection.

The "Scan" button initiates a scan. The "Help" button brings up Epson's help menu. The "Close" button shuts down the software.

The "Customize" button is important to review before scanning. Selecting this button

opens the **Customize window**. See the screen capture below.

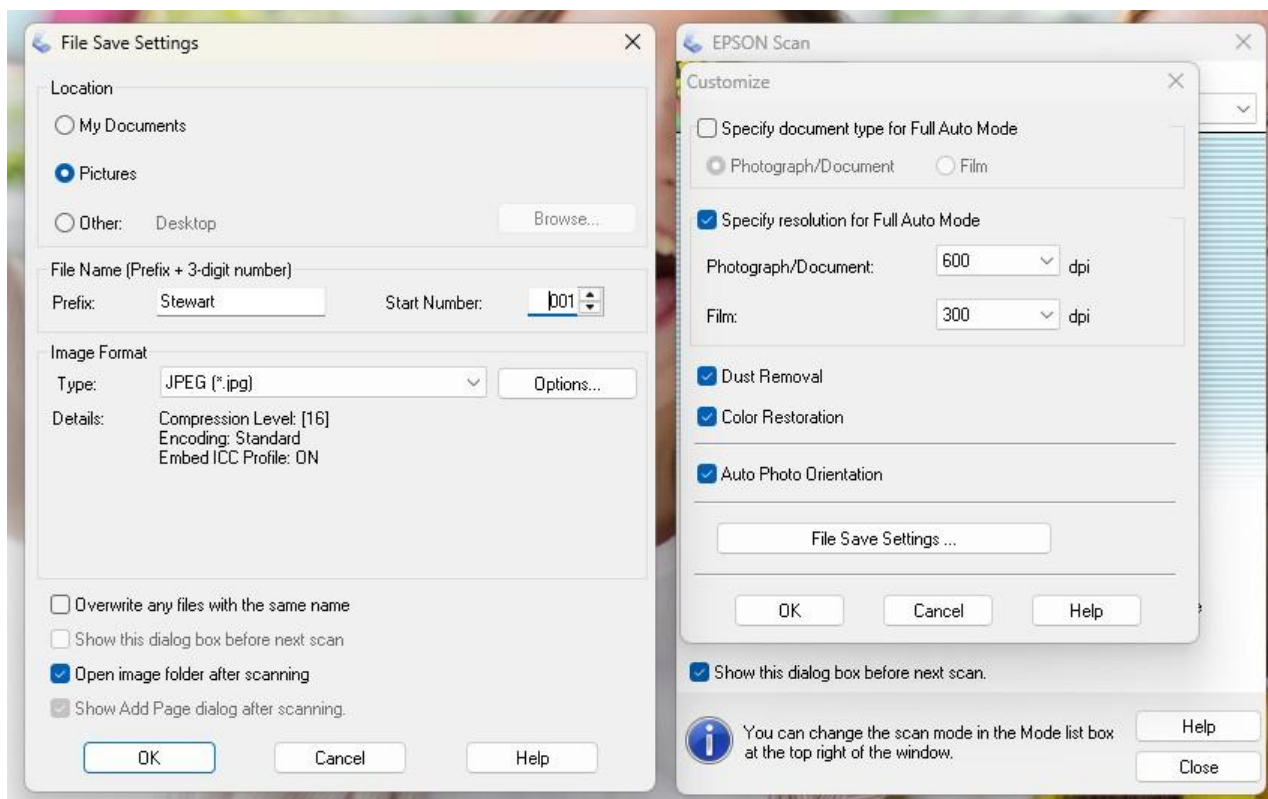


Figure 4 Epson Customize Window on the right on top of the Full Auto Mode window and the File Save Settings window opened on the left.

It is a good practice to open this window and check before starting a scanning session. The Customize window provides an option to specify document type. For this user guide, we assume that that we are only scanning photos in “Full Auto Mode”. We will go into detail on film scanning in “Home Mode” discussion.

The next option is “Specify resolution for Full Auto Mode”. More than a dozen resolution levels are offered. FamilySearch recommends 600 dpi. Going to a larger resolution dramatically increases the scan time and scanned file size. Going smaller risks losing details in the scanned image.

Epson offers two scan options to improve the scanned image. Select them both:

- Color Restoration – fix old, faded, or badly exposed photos.
- Dust Removal – virtually clean dust marks from original photos

Epson also offers “Auto Photo Orientation” where it will attempt to rotate the photo so it is right side up.

Selecting the “File Save Settings” button opens the “File Save Settings” window shown in Figure 4 on the left. Finally, the “Show this dialog box before the next scan” box when selected will

cause this window to open after every scan. Typically, this wouldn't be selected to make scanning go faster.

The **"File Save Settings"** window sets the save options for scans. In the "Location:" field, select "Other." After inserting your USB Thumb Drive into the USB port on the host computer, select the "Browse" box to locate the path to the folder on your thumb drive where you want to store your scans. Choose and enter a "Prefix" to label your scans and then set the "Start Number:" which is usually 001 for the first scan. The Scan files will be named Prefix_Number, with the number incrementing after each scan. We recommend that "Type" field in Image Format be set to JPEG. Ignore the Options Dialog Box. It opens the Epson JPEG Plug-in Settings window which should be left in the default settings. Normally, none of the four options at the bottom of the page would be selected. Select "OK" in both the File Save Settings and Customize windows to save your settings and return to the Full Auto Mode Page.

Photo Placement for Scanning

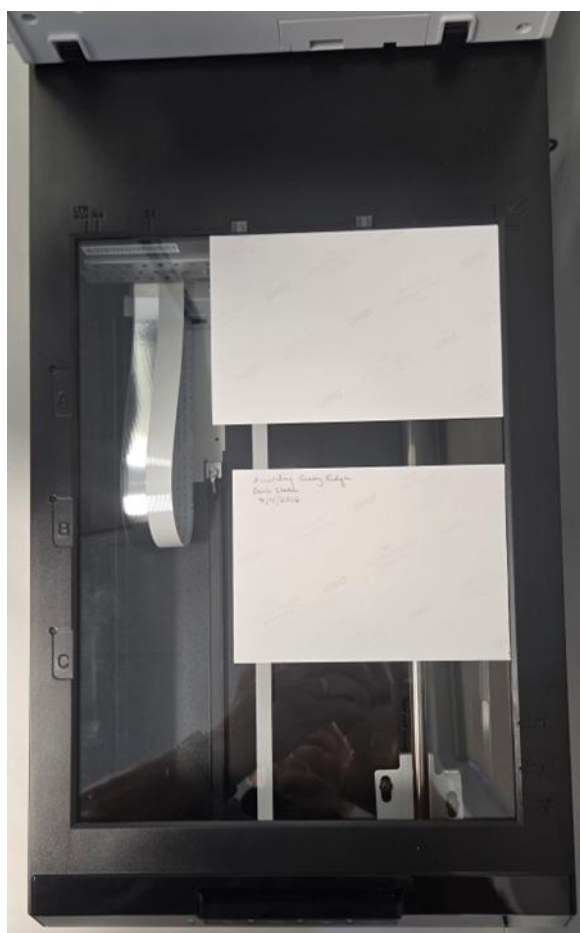


Figure 5 Correct placement of two photos on the scan bed.

To scan, the photo needs to be placed in the top right corner of the scan bed. Raise the scanner cover to access the scan bed. (See the photo on the left.) Multiple photos can be placed on the scan bed aligned to the right side of the scan bed, providing there is some space between the photos, the software will separate the photos and provide separate images. When the photos are aligned to the left side of the scan glass (rather than the right side) the scanner crops part of the image on the right so it is important to place the photos on the left side, starting at the top corner next to the arrow on the scan bed frame. Then close the lid.

Initiate the scan with the "Scan" button on the Full Auto Mode home page. The scanner will scan the images on the flatbed scan glass.

Epson Home Mode

To the right is the Epson Home Mode Window.

The Document Type Window offers a number of types to choose from: Photograph, Positive Film (like a 35 mm color slide), Color Negative Film, Black & White Negative Film, Illustrations, Magazine, Newspaper, and Text/Line art.

The “Image Type” is typically “Color” though you may have applications for “Greyscale” or “Black & White”

The Destination is always “Other”. The “Resolution;” is 600 dpi as before for photographs or 300 dpi for film. “Target” size is typically “Original”.

Image Adjustments are dependent on the Document Type.

“Descreening” is used in scanning newspapers and magazines that were printed with small dots which create a moiré or “rosette” pattern when scanned.

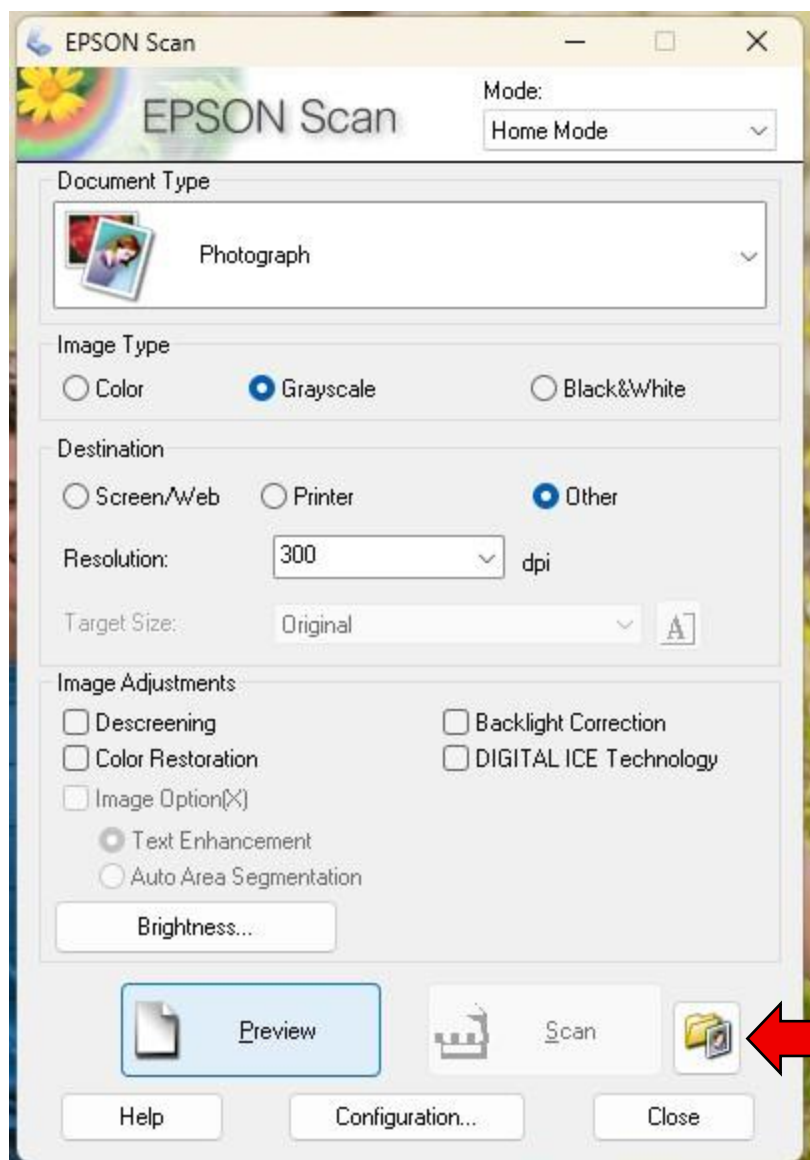


Figure 6 Epson Home Mode window.

Backlight Correction removes shadows with too much background light. Color Restoration fixes old, faded, or badly exposed photos. Dust Removal, virtually cleans dust marks from original photos. Digital ICE Technology removes dust marks that dust removal cannot do, but takes longer to complete. Text Enhancement improves the text quality in scanned documents. Brightness opens a dialog box to adjust the overall image lightness and darkness.

The File Icon pointed to by the red arrow opens the “File Save Settings’ window which is identical to the same window in “Full Auto Mode”. See the description on pages 3 and 4.

In Home Mode, unlike Full Auto Mode, scanning occurs in two steps. Selecting “Preview” does an initial scan that you can review and adjust. Once you are satisfied, selecting “Scan” will do a final scan to save the image.

Scanning Slides and Film in Home Mode

To scan slides and film, the Epson scanner needs to be physically reconfigured. The two pictures below illustrate. The photo on the left has the “document mat” in place. It is the white object on the scanner cover. You can see the black mat handle at the top of the mat. Grab the mat by the handle and gently slid the mat up to remove it. Once it is removed, the scanner cover will look like the photo on the right

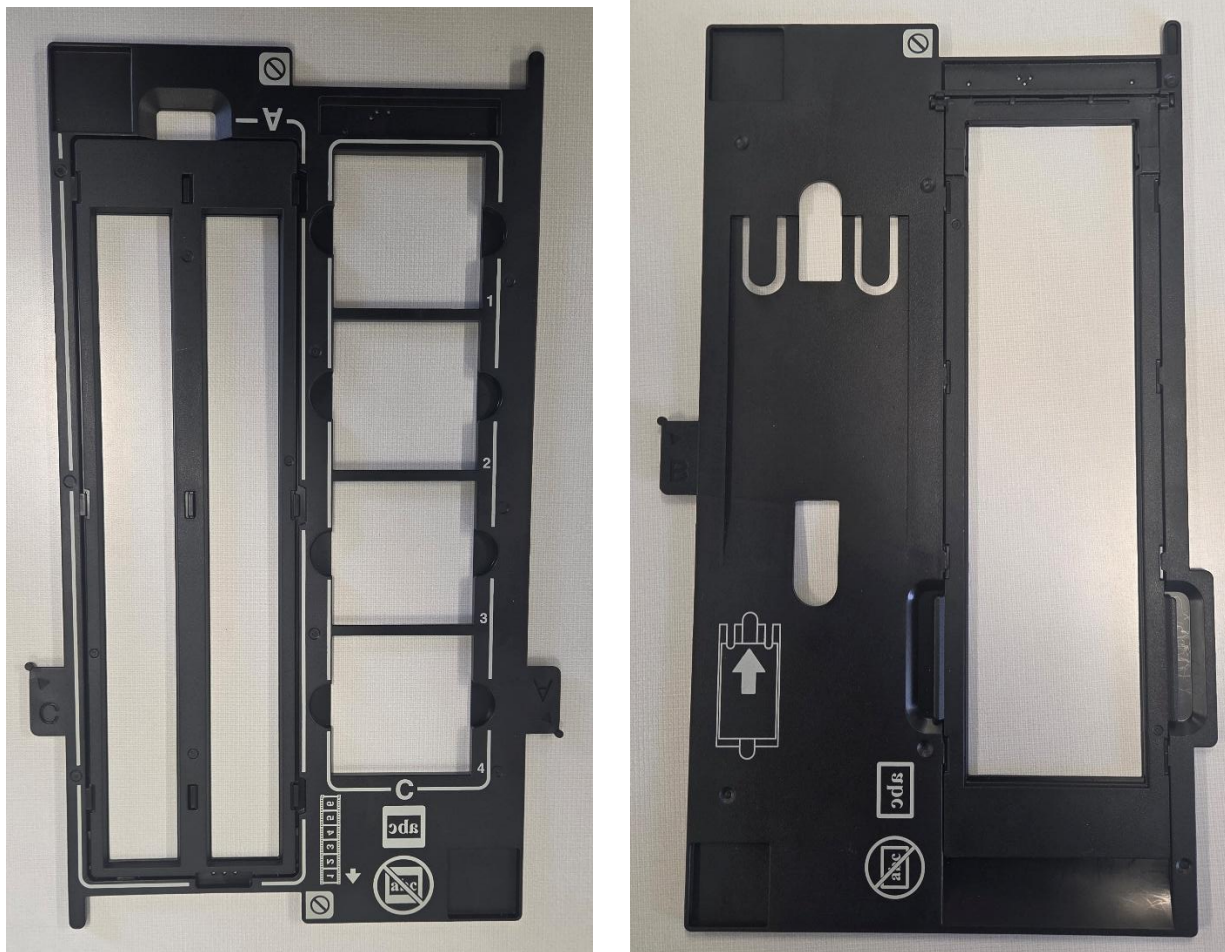


Figures 7 & 8. Epson Scanner with document Mat on the left and with the mat removed on the right.

With this reconfiguration, the transparency unit window is available for film and slide scanning.

The scanner has two holders. The first holder supports two scanning formats. The first is the 35 mm film strip holder labeled “A”. Open the hinged cover of the film holder and slide one or two film strips all the way into the film holder with the shiny base side facing down. Your images and any wording on the film strips should appear backwards on the side that faces up. Close the cover and press it down until you hear a click. Then press down on all the edges of the covers to

secure them. Make sure the tab labelled “A” on the film holder fits into the area labelled “A” on the scanner.



Figures 9 & 10. On the left is the 35 mm film holder. The “A” position long slots hold up to two film strips. The “C” position holds up to four 35 mm slides. On the right is the medium format film holder labeled “B”.

To scan slides, rotate the holder 180 degrees and position the tab labelled “C” on the film holder in the area labelled “C” on the scanner. Place up to four slides in the film holder with the shiny base side facing down. Your images should appear backwards on the side that faces up. Your images should be oriented as shown. See the photo on the following page.

For scanning medium format film, load the film in the film holder the same way that the 35 mm film was loaded, as described previously. Place the tab labeled “B” on the film holder in the area labeled “B” on the scanner.

Here is an example using 35 mm slides. The film holder tab labeled “C” is laying over the area labeled “C” on the scanner. Four slides have been loaded in the holder. The 35 mm film strip holder is unused and empty.

Close the lid before scanning.

November 6, 2025

Configuring the software for 35 mm slide scanning

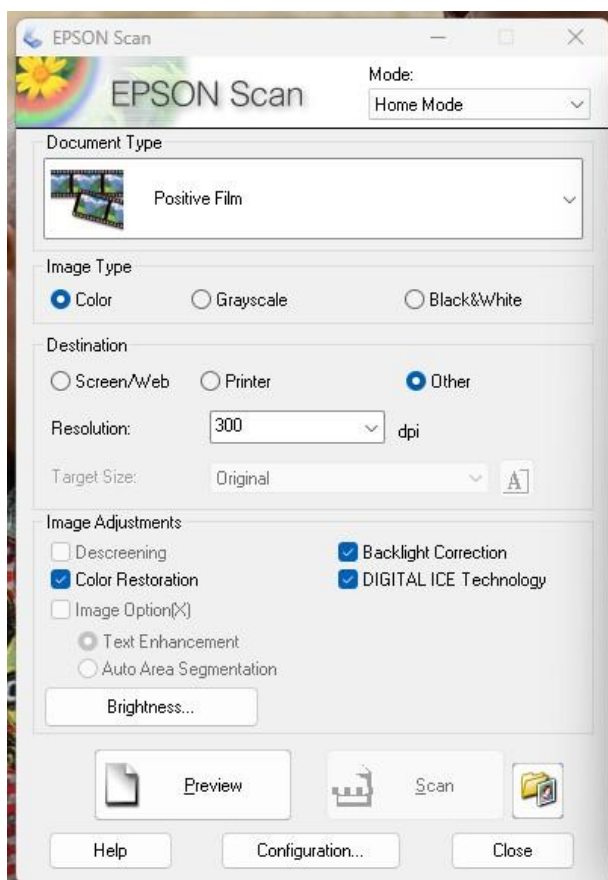


Figure 12. Scan software configured for 35 mm slides.

After preparing the scanner for film scanning and loading the slides in the film holder, the Epson Scan software is configured to scan 35 mm slides.

The “Document Type” is “Positive Film”. The “Image Type” is “Color”. “Destination” is “Other”.

Note that in this example, the “Resolution” is set to 300 dpi. In an experiment, four slides were scanned at 300 dpi which took 8 minutes. Setting the resolution to 600 dpi increased the scan time for the four slides to 24 minutes. The 300-dpi setting provides reasonable quality while the 600-dpi setting takes an excessive amount of time to complete the scanning operation.

In comparison, the MES Slide Snap Pro scanner can scan 80 slides in about 3 minutes making it a much faster option.

When the preview button is selected the initial

scan occurs. The “Preview” window opens with the initial images. See the example on the next page.

In “Home Mode” the initial scan gives the user a chance to review the image quality and settings to allow for image editing and enhancement. (See Epson’s documentation for details.) In most cases the initial image will be acceptable.

The Preview window has two tabs: Normal and Thumbnail.

- Normal preview displays your previewed image(s) in their entirety. You must select the scan area and make any image quality adjustments manually.
- Thumbnail preview displays your previewed image(s) as thumbnail(s). Epson Scan automatically locates the edges of your scan area, applies automatic exposure settings to the image(s), and rotates the image(s) if necessary.

Choose the Thumbnail setting. The icons in the “Frame” area allow you to rotate or flip the image. Windows photo editing software will do that with less difficulty.

Once the preview is complete and the image is found to be acceptable, the greyed out “Scan” button becomes available. Select it to complete the scan.

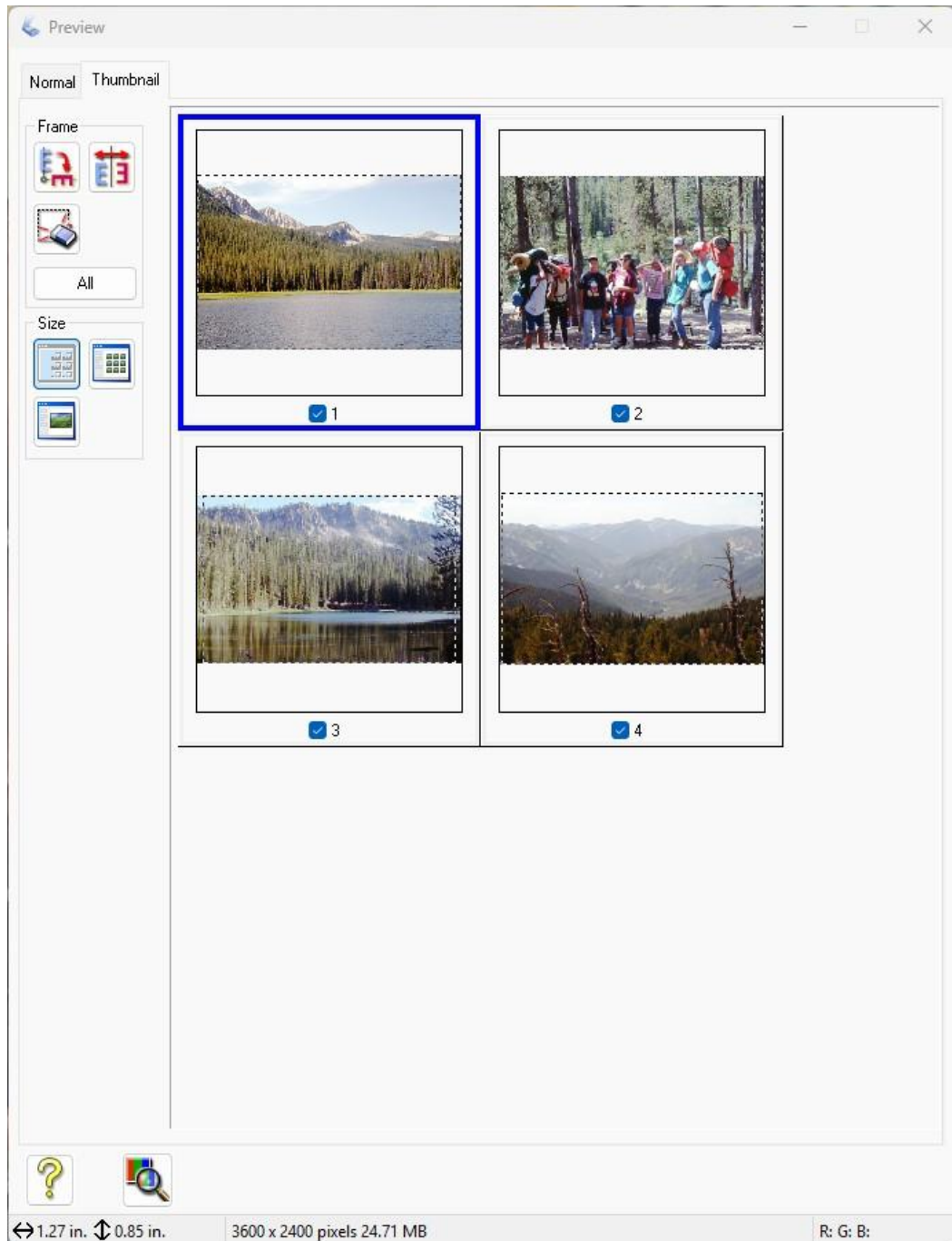


Figure 13. The Preview window when scanning 35 mm slides.

Once you are through scanning, please return the film holders and carefully reinstall the document mat.